



GMT MONTHLY MEMBERSHIP PROGRESS REPORT

Results as of: 4/30/2019

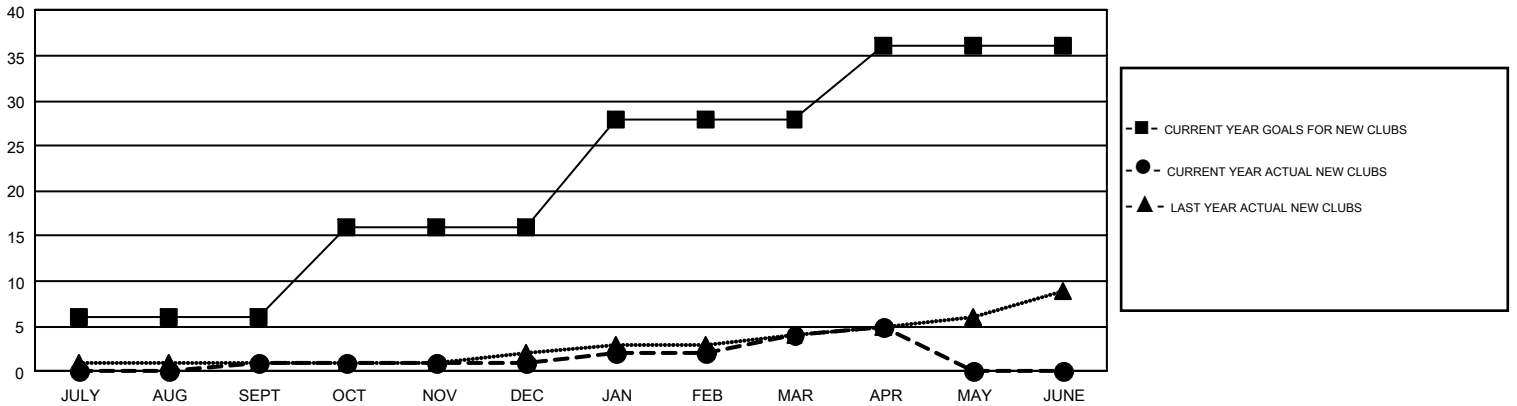
GMT Constitutional Area 1, Group C

GMT: STEVE ANTON

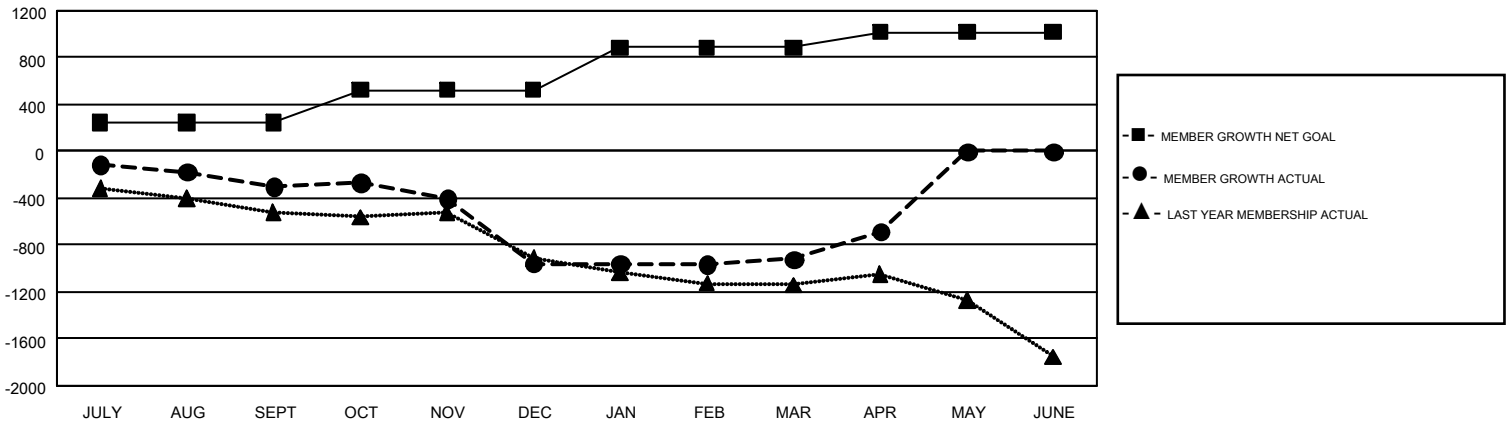
REPORT DOES NOT INCLUDE CLUBS IN UNDISTRICTED AREAS.

Clubs				Members			
RESULTS FOR 2018-2019				RESULTS FOR 2018-2019			
QUARTER	NEW CLUB GOAL	NEW CLUBS	DROPPED CLUBS	QUARTER	MEMBER GROWTH NET GOAL	MEMBER GROWTH ACTUAL	DROPPED MEMBERS ACTUAL (including transfers)
JULY/AUG/SEPT	6	1	7	JULY/AUG/SEPT	246	815	988
OCT/NOV/DEC	10	0	10	OCT/NOV/DEC	278	823	1,411
JAN/FEB/MAR	12	3	3	JAN/FEB/MAR	365	932	783
APR/MAY/JUNE	8	1	0	APR/MAY/JUNE	131	515	260

GOALS AND ACTUAL NEW CLUBS CUMULATIVE



GOALS AND ACTUAL MEMBERS CUMULATIVE



DROPPED CLUBS: 20	846 CLUBS OF 1,475 ADDED 1 OR MORE NEW MEMBERS	GENDER DISTRIBUTION
DROPPED MEMBERS		MALE 28,327 (71.22%)
DECEASED 560		FEMALE 11,448 (28.78%)
CLUB CANCELLED 151	CLICK HERE FOR CUMULATIVE MEMBERSHIP DATA	TOTAL FAMILY UNIT MEMBERS 7,496
OTHER 2,724		FAMILY MEMBERS PAYING HALF DUES 3,839
TOTAL 3,435		